

# PD-1 (M699V) Mouse mAb

CatalogNo: [AH0001](#)

## •Main information

<b>Target</b>	PD1
<b>Reactivity</b>	Human
<b>Applications</b>	IHC,IF,ELISA
<b>MW (kDa)</b>	32kD (Calculated) 56kD (Observed)
<b>Host Species</b>	Mouse
<b>Isotype</b>	IgG1,Kappa

## •Recommended Dilutions

IHC 1:200-400
IF 1:200-1:1000
ELISA 1:500-5000 Note: For IHC, we suggest antigen retrieval with TE buffer pH 9.0 (Cat#RH0011)

## •Detailed information

<b>Specificity</b>	The antibody can specifically recognize human PD-1 protein.
<b>Storage</b>	-15°C to -25°C/1 year(Do not lower than -25°C, Ship by ice bag)
<b>Formulation</b>	PBS, 50% glycerol, 0.05% Proclin 300, 0.05%BSA
<b>Purification</b>	The antibody was affinity-purified from ascites by affinity-chromatography using specific immunogen.
<b>Clonality</b>	Monoclonal
<b>Clone Number</b>	M699V

## •Target Information

<b>Gene name</b>	PDCD1 PD1
<b>Protein Name</b>	Programmed cell death protein 1 (Protein PD-1) (hPD-1) (CD antigen CD279)

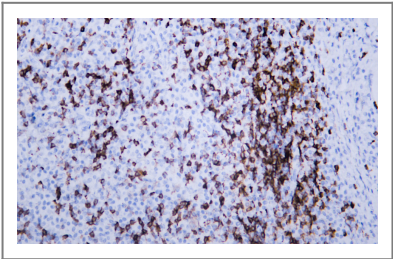
Organism	Gene ID	UniProt ID
Human	<a href="#">5133</a> ;	<a href="#">Q15116</a> ;

<b>Cellular Localization</b>	Membranous, Cytoplasmic
------------------------------	-------------------------

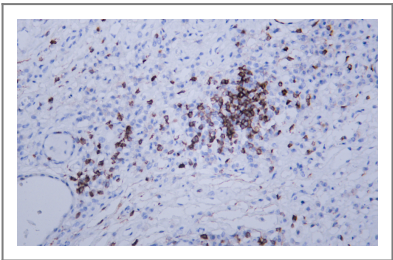
<b>Tissue specificity</b>	Placenta,Pooled tissue,Uterine cervix,
---------------------------	--

<b>Function</b>	developmental stage:Induced at programmed cell death.,Disease:Genetic variation in PDCD1 is associated with susceptibility to systemic lupus erythematosus type 2 (SLEB2) [MIM:605218]. Systemic lupus erythematosus is a chronic, inflammatory and often febrile multisystemic disorder of connective tissue. It affects principally the skin, joints, kidneys and serosal membranes. It is thought to represent a failure of the regulatory mechanisms of the autoimmune system.,Function:Possible cell death inducer, in association with other factors.,similarity:Contains 1 Ig-like V-type (immunoglobulin-like) domain.,subunit:Monomer.,
-----------------	--

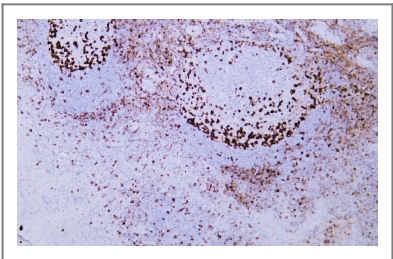
•Validation Data



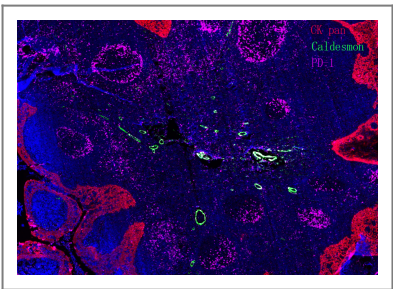
Human lymphoma tissue was stained with Anti-PD-1 Antibody



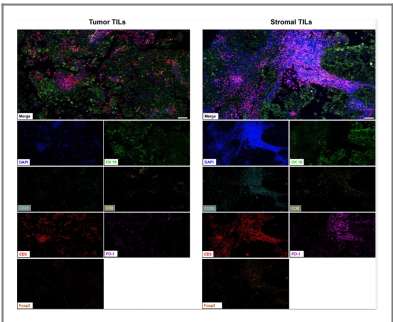
Human lymphoma tissue was stained with Anti-PD-1 Antibody



Human tonsil tissue was stained with Anti-PD-1 Antibody



Fluorescence multiplex immunohistochemical analysis of normal human appendix tissue (formalin-fixed paraffin-embedded section).The section was incubated in 3 rounds of staining; in the order of CK PAN ., PD-1., Caldesmon pan. ,each using a separate fluorescent tyramide signal amplification system : Treble-Fluorescence immunohistochemical mouse/rabbit kit (pH9.0)



Zou, Ming-Xiang, et al. "A four-factor immune risk score signature predicts the clinical outcome of patients with spinal chordoma." Clinical and translational medicine 10.1 (2020): 224-237.

•Contact information

Orders: order@lamarck.cn  
Support: support@lamarck.cn  
Telephone: 400-801-6722  
Website: http://www.Lamarck.com  
Address: All rights reserved ©2025 Lamarck.



Please scan the QR code  
to access additional  
product information:  
**PD-1 (M699V)**  
**Mouse mAb**

---

For Research Use Only. Not for Use in Diagnostic Procedures.

[Antibody](#) | [ELISA Kits](#) | [Protein](#) | [Reagents](#)