

## Nrf2 (R370G) Rabbit mAb

CatalogNo: AR0002 **Recombinant FSS™**

### •Main information

<b>Target</b>	Nrf2
<b>Reactivity</b>	Human,Mouse,Rat
<b>Applications</b>	WB,IHC,IF,IP,ELISA
<b>MW (kDa)</b>	68kD (Calculated) 100kD (Observed)
<b>Host Species</b>	Rabbit
<b>Isotype</b>	IgG,Kappa

### •Recommended Dilutions

IHC	1:1000-1:5000
WB	1:2000-1:10000
IF	1:200-1:1000
ELISA	1:5000-1:20000
IP	1:50-1:200
Note: For IHC, we suggest antigen retrieval with TE buffer pH 9.0 (Cat#RH0011)	

### •Detailed information

<b>Specificity</b>	Endogenous
<b>Storage</b>	-15°C to -25°C/1 year(Do not lower than -25°C, Ship by ice bag)
<b>Formulation</b>	PBS, 50% glycerol, 0.05% Proclin 300, 0.05%BSA
<b>Purification</b>	Protein A
<b>Clonality</b>	Monoclonal
<b>Clone Number</b>	R370G

### •Target Information

<b>Gene name</b>	NFE2L2 NRF2
<b>Protein Name</b>	Nuclear factor erythroid 2-related factor 2 (NF-E2-related factor 2) (NFE2-related factor 2) (HEBP1) (Nuclear factor, erythroid derived 2, like 2)

Organism	Gene ID	UniProt ID
Human	<a href="#">4780;</a>	<a href="#">Q16236;</a>
Mouse	<a href="#">18024;</a>	<a href="#">Q60795;</a>
Rat	<a href="#">83619;</a>	<a href="#">O54968;</a>

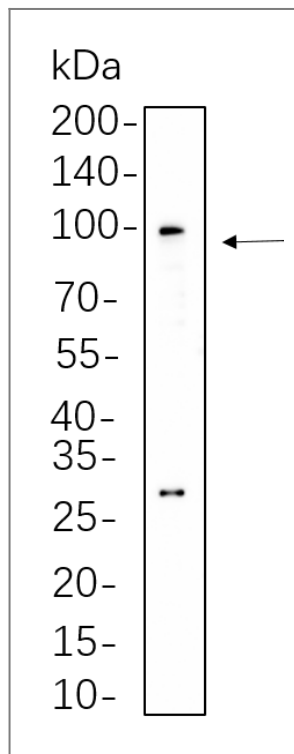
**Cellular Localization** Cytoplasmic, Nuclear

**Tissue specificity** Widely expressed. Highest expression in adult muscle, kidney, lung, liver and in fetal muscle.

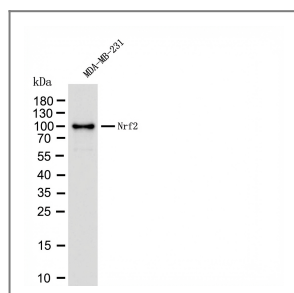
## Function

Domain: Acidic activation domain in the N-terminus, and DNA binding domain in the C-terminus., Function: Transcription activator that binds to antioxidant response (ARE) elements in the promoter regions of target genes. Important for the coordinated up-regulation of genes in response to oxidative stress. May be involved in the transcriptional activation of genes of the beta-globin cluster by mediating enhancer activity of hypersensitive site 2 of the beta-globin locus control region., PTM: Phosphorylation of Ser-40 by PKC in response to oxidative stress dissociates NFE2L2 from its cytoplasmic inhibitor KEAP1, promoting its translocation into the nucleus., similarity: Belongs to the bZIP family., similarity: Belongs to the bZIP family. CNC subfamily., similarity: Contains 1 bZIP domain., subcellular location: Cytosolic under unstressed conditions, translocates into the nucleus upon induction by electrophilic agents., subunit: Heterodimer. May bind DNA with an unknown protein. Interacts with KEAP1. Interacts via its leucine-zipper domain with the coiled-coil domain of PMF1., tissue specificity: Widely expressed. Highest expression in adult muscle, kidney, lung, liver and in fetal muscle.,

## • Validation Data



C6 whole cell lysates were separated by 10% SDS-PAGE, and the membrane was blotted with primary antibody(1:1000).



Western blot analysis was performed using MDA-MB-231 cell lysates; proteins were separated by 4-20% SDS-PAGE, with the primary antibody applied at a dilution of 1:5000.

## •Contact information

Orders: order@lamarck.cn  
Support: support@lamarck.cn  
Telephone: 400-801-6722  
Website: <http://www.Lamarck.cn>  
Address: All rights reserved ©2025 Lamarck.



Please scan the QR code  
to access additional  
product information:  
**Nrf2 (R370G) Rabbit  
mAb**

---

For Research Use Only. Not for Use in Diagnostic Procedures.

[Antibody](#) | [ELISA Kits](#) | [Protein](#) | [Reagents](#)